

WOODFIELD

SWIVEL JOINT





SWIVEL JOINT

We are a leading swivel joint manufacturer designing a range of products suitable for specific applications. Our swivel joints undergo rigorous quality checks and are independently tested and certified by TPIA, or the Notified Body, for safety & efficiency.

WOODFIELD SUPER SLIM MODEL: WSS

FEATURES

Single “big” ball race design for maximum load capacity. All ball track cassettes are hardened steel

Dual split flange design allows the product path material to be exactly matched with the product being handled. The ball track cassette is made from hardened steel for maximum strength. Complete Bearing Module Cassette replacement is possible making it easy for maintenance.

Split flange design also allows for maximum maintenance efficiency

Sizes in 2” through 24”

Standard flange(product path) materials of construction:
Carbon steel/Low Temp Carbon Steel
Stainless steel
Aluminium

Specialty materials:
Duplex & Super Duplex stainless steel
Inconel
Monel
Titanium

Seal material to suit the application, typically Viton™, Nitrile, PTFE, Kalrez™

MAWP up to 40 Bar

Standard operating temperature range -40C to +240C
(material and seal dependent)

Standard 2 year limited warranty

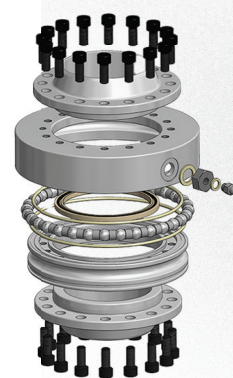
OPTIONAL FEATURES

Leak Detection Port

Nitrogen purged raceways

Available in all standard “Styles”,
10 through 80

Inlet & outlet connections: Threaded,
Flanged & Union.



WOODFIELD DOUBLE RACE MODEL: WL2

FEATURES

Dual ball race for maximum load capacity (steel raceways are hardened)

Split Flange design for ease of main seal replacement in field.

Sizes in 2” through 24”

Standard materials of construction:
Carbon Steel/Low Temp Carbon Steel
Stainless steel
Aluminium
PTFE lined carbon steel or stainless steel

Specialty materials:
Duplex & Super Duplex stainless steel
Inconel
Monel
Titanium

Dual product sealing with leak detection port

Seal material to suit the application, typically Viton™, Nitrile, PTFE, Kalrez™

MAWP up to 40 Bar

Standard operating temperature range -40C to 240C
(material and seal dependent)

Standard 2 year limited warrant

OPTIONAL FEATURES

Nitrogen purged raceways

Steam jacketing.
Internal and External

Available in all standard “Styles”,
10 through 80

Full selection of inlet & outlet connections: Threaded, Flanged & Union.

WOODFIELD DOUBLE RACE CRYOGENIC MODEL: WL2C

FEATURES

Dual ball race for maximum load capacity

Single split flange for ease of maintenance

Sizes in 2" through 42"

Smooth swivel movement even at -196°C

Standard Material of Construction:
Stainless Steel

Specialty materials:

Duplex & Super Duplex stainless steel

Inconel

Monel

Titanium

Dual product sealing with leak
detection port

Special self-energised seals are used
suitable for low temperature
application.

MAWP up to 40 bar

Standard operating temperature
range -196°C to +100°C

Standard 2 years limited warranty



WOODFIELD DOUBLE RACE
CRYOGENIC
MODEL: WL2C

