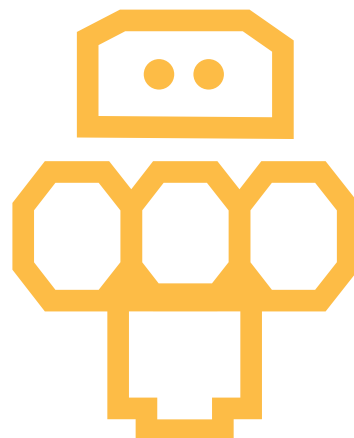
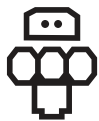


WOODFIELD



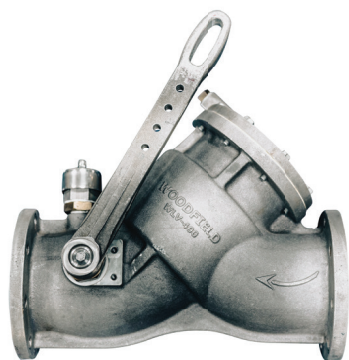
ACCESSORIES





ACCESSORIES

LOADING VALVE



STANDARD FEATURES

Loading Valve is specifically designed for use in top loading arm applications for Hydrocarbon Product. Manually operated “dead man” style with spring-loaded handle to ensure the operator is present whenever the product is flowing into the tank.

2 stage “soft” close greatly reduces hydraulic hammer when valve is closed against a flowing product.

Loading Valve is available in 3”, 4” and 6” size with TTMA inlet and outlet flanged connections.

Optional integral vacuum breaker.

Optional remote operation handle.

API COUPLER



STANDARD FEATURES

4 Lug Design

Automatic snap on functionality with unique stainless steel 4 lug design

Stainless Steel Outer Sleeve

SS outer sleeve for long life durability

Hard Anodized Body

Aluminum hard anodized body

Easy Strip Serviceability

The infield removable handle and poppet will get you back to work quicker with minimal down time when nose seal replacement is required

TECHNICAL FEATURES

Working Pressure

Up to 10 bar (145 psi)

Max surge pressure

Up to 34 bar (493 psi)

Test pressure

15 bar (217 psi)

Max recommended flow inline

with RP API 1004 8th edition

Temperature Range

WV 400 VB -30°C to +100°C
(-22 °F to 212 °F)

WV 400 VT -40°C to +100°C
(-40°F to +212°F)

WV 400 NL -30°C to +100°C
(-22°F to +212°F)

Seals

WV 400 VB Viton B

WV 400 VT Viton GFLT

WV 400 NL Nitrile

Weight

18.7# (8.5 kg)

Flange

4” TTMA

QUICK DRY COUPLING



STANDARD FEATURES

Major chemical, petrochemical, LPG, Propane/Butane

Safe & reliable

Easy to use

Can handle explosive & hazardous services

Safety factor 5

Spill Free Connection
Disconnection Operation

Robust construction

ATEX compliant

CE – Certified

OPERATION PHILOSOPHY

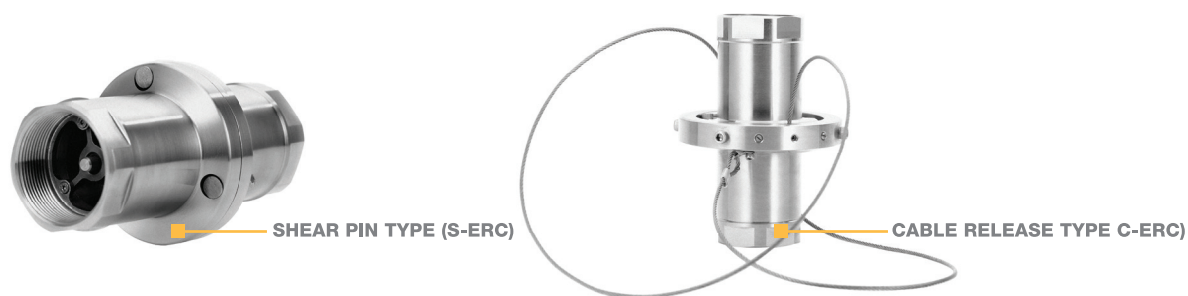
W-QDC is 2 stage operation coupling. To connect hose unit to tank unit, first turn handle by 15° clock wise. To open the valves rotate the handle further by 90°.

This “two-step operation” ensures spill free transfers

TECHNICAL SPECIFICATIONS

| | WVH SERIES | WVL SERIES | WVC SERIES |
|--------------------------|---|---|--|
| Model | WVH10, WVH20, WVH30, WVH40 | WVL20, WVL30 | WVC20, WVC30, WVC40 |
| Sizes available | 1”, 2”, 3”, 4” | 2”, 3” | 2”, 3”, 4” |
| Material of construction | Stainless Steel, Aluminum, AISI 904L, Monel, Titanium (Others on request) | Stainless Steel | Stainless Steel |
| Seal Material | Viton-B, Viton-GFLT, Nitrile/Buna, (others on request) | Viton-B, Viton-GFLT, Nitrile/Buna, (others on request) | IPTFE/UHMWPE |
| Design pressure | 25 bar (362.5 psi) | 25 bar (362.5 psi) | 25 bar (362.5 psi) |
| Test pressure | 37.5 bar (543.8 psi) | 37.5 bar (543.8 psi) | 37.5 bar (543.8 psi) |
| Operating temperature | Viton-B: -30°C to +100°C (-22 °F to 212 °F) Viton GFLT: -40°C to +100°C (-40 °F to 212 °F) Nitrile/Buna: -30°C to +100°C (22 °F to 212 °F) | Viton-B: -30°C to +100°C (-22 °F to 212 °F) Viton GFLT: -40°C to +100°C (-40 °F to 212 °F) Nitrile/Buna: -30°C to +100°C (22 °F to 212 °F) | -196°C to +100°C (-320.8 °F to 212 °F) |
| Safety factor | 5 | 5 | 5 |
| End connection | Threaded end (BSP/NPT) Flange end (ASME/DIN) | | |
| Applications | Chemical, Petro-chemical, Acid, Alkali etc. | LPG, Propane, Butane, Ammonia | LNG, Ethylene, Liquid Nitrogen |

EMERGENCY RELEASE COUPLING



STANDARD FEATURES

- Spill-free separation
- Coupling automatically senses an excessive load and closes the valves and disconnects
- High flow rate
- Low pressure drop
- Easy maintenance and onsite mentainance is possible

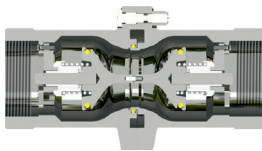
OPERATION PHILOSOPHY

Shear Pin Type (S-ERC)
Non-axial forces are generated on the shear bolts as the tanker moves in case of an emergency. Since these bolts are sheared, they instantly close the two valves present inside the ERC and prevent spillage.

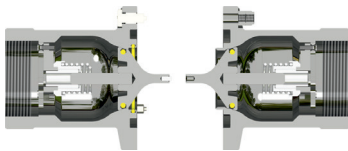
Cable Release Type (C-ERC)
Non-axial forces are generated when a tanker moves, in case of an emergency. These forces are transferred to the ERC spring plungers by a cable, which separates them and instantly shuts both valves inside. This prevents spillage.

TECHNICAL SPECIFICATIONS

| | |
|--------------------------|---|
| Type / Model | Shear pin type (S-ERC), Cable release type (C-ERC) |
| Sizes Available | 2", 3", 4" |
| Shear Bolt (For S-ERC) | 13kN, 24kN, 33kN & 45kN |
| Material of construction | Stainless Steel , Aluminum, 904L, Hastelloy, Duplex steel **Other materials available on request |
| Seals | Viton B, Viton GFLT, Nitrile/Buna **other materials on request on request |
| Test Pressure | 38 bar (May vary upon size and material) |
| Working Pressure | Max. 25 bar (May vary upon size and material) |
| Operating Temperature | Viton-B: -40°C to +100°C (-40°F to 212°F) Viton GFLT: -40°C to +100°C (-40°F to +212°F) Nitrile/Buna: -30°C to +100°C (-22°F to 212°F) |
| End Connections | Flanged end/Threaded end (BSP/NPT) |
| Applications | Tank truck loading / unloading arm / hose for LPG, Propen, Ammonia, Chemicals, and Hydrocarbon |
| Certification | EN 10204 Type 2.2 with all supplies. On demand EN 10204 Type 3.1, CE certification, ATEX certification |



CONNECTED
ERC consists two halves and when connected allows maximum flow



DISCONNECTED
An activated ERC splits into the halves and the individual halves closes instantly to prevent spillage